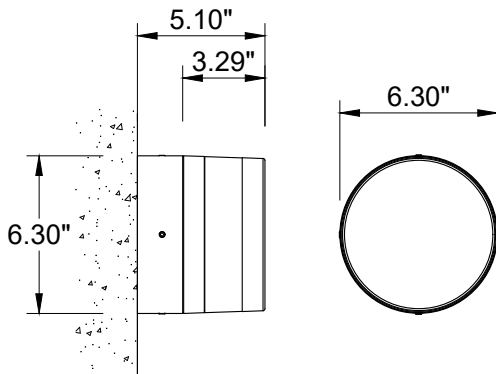


# INSTALLATION AND SERVICE MANUAL

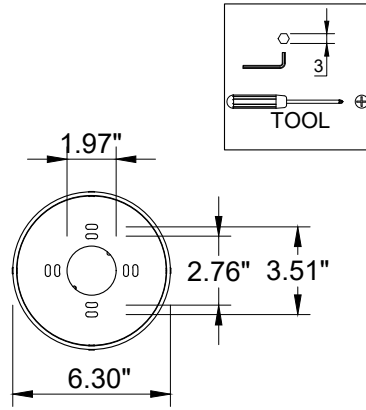
**LIGMAN**  
NORTH AMERICA

For installation of Lightwave wall light COB  
Model. ULW-30001.

Product drawing (dimensions)

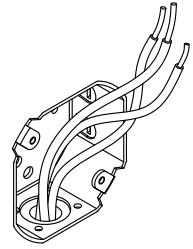


SUITABLE FOR WET LOCATIONS

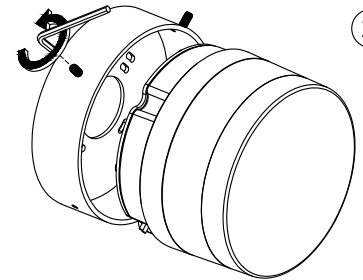


MOUNTING DETAIL

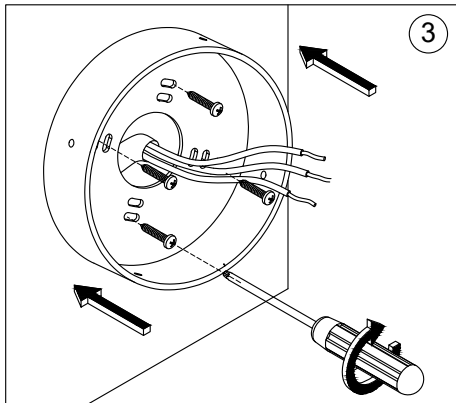
**NOTE**  
Junction box.



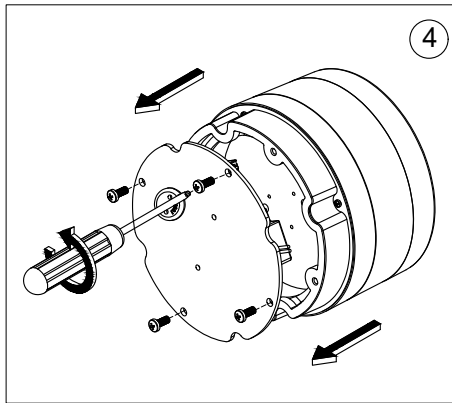
1



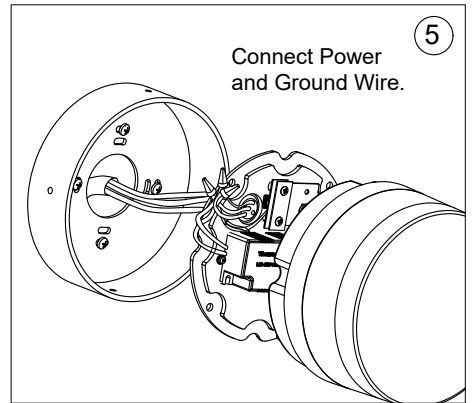
2



3

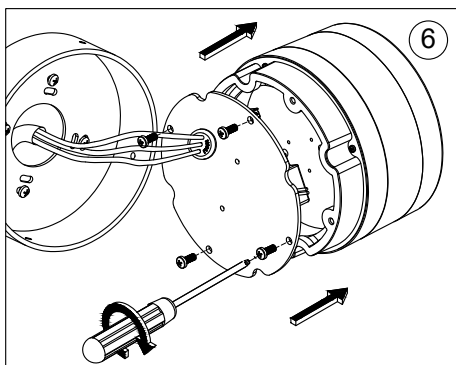


4

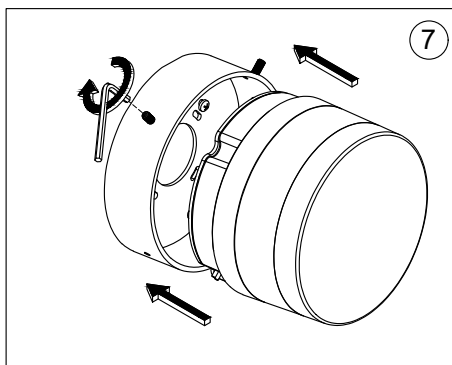


Connect Power  
and Ground Wire.

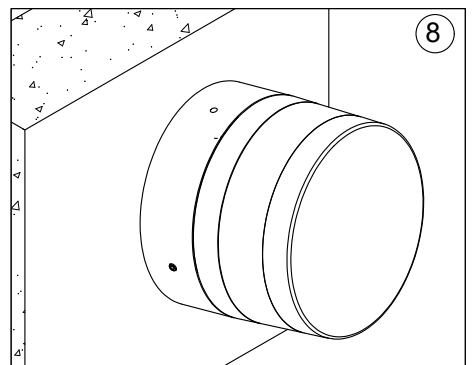
5



6



7



8

## Notice to installer :

**1.WIRING INSTRUCTIONS** Warning : RISK OF FIRE AND ELECTRICAL SHOCK. : FIXTURE MUST BE INSTALLED BY A QUALIFIED ELECTRICIAN ONLY>FIXTURE IS INTENDED FOR INSTALLATION IN ACCORDANCE WITH THE NATIONAL ELECTRICAL CODE, LOCAL AND FEDERAL CODE SPECIFICATIONS. DISCONNECT POWER BEFORE SERVICING.

**2.This fixture has a VOLTAGE SPECIFIC BALLAST,Check that the supply voltage is the same as the installed ballast voltage.**

**Ligman Lighting USA**

7144 NE Progress Court, Hillsboro  
Oregon, 97124, USA  
Tel : 503 645 0500 | Fax : 503 645 8100

[www.ligmanlightingusa.com](http://www.ligmanlightingusa.com)

ULW-30001 25/04/24 REV.1  
1/1

FM-TS-13-1/13-05-2563/Rev.6